



AUSTRALIAN SOCIETY OF MARINE ARTISTS

LIGHTHOUSES

Wednesday 31st January 2024

This new online exhibition featured the subject of Lighthouses with each artist invited to submit a painting in any manner or context preferred. Please enjoy this selection and admire the standards and interpretations to be found in the Australian Society of Marine Artists.

This is our first online exhibition of 2024, however two online exhibitions from 2023 ('Fish and Ships' and 'Small Boats') can still be perused on our website.

Julian Bruere
ASMA President

Foreword by Guest Judge, William Reid, President of 'Friends of Alma Doepel':

I am truly honoured to be asked to make a decision as to the winner of the ASMA Lighthouse Series. I feel unqualified to stand in judgement of such fine artistic work. If I could paint half as well as these artists I would be thrilled. It comes down to which of these works I would choose to hang on a wall in my home. So, with this thought in mind, I make my selection of three I would take home with me. The winner, for me, is the one I would choose if I could only have one. I loved the colours, the stillness and the reflection of this work by Clive Sinclair. It leaves me feeling calm and in awe of the detail captured in the reflected light.

Many works are available for purchase, any interested parties may reach out to the secretary to be put in direct contact with the relevant artist, at ASMA.secretary.contact@gmail.com
Please note, all sizes are the size of the actual work not including a frame. Works which are sold with a frame included in the price are denoted as such, next to the price.

Clive Sinclair

Evening Light, Low Head Tasmania

Oil on canvas

180 x 120cm

\$10,000

Best in Show



Don Braben

On deck, Cape Grafton off North Reef

Lighthouse

Watercolour

37 x 29cm

\$450 (Framed)



Don Fogg

Cape Willoughby Light, Kangaroo Island

Gouache

37 x 55cm

\$500



Don Talintyre

Brooding Tasman Island

Oil

91 x 121cm

\$5,400 (framed)



Earl Hingston

Tacking Point Lighthouse. Port Macquarie, NSW

Watercolour

40 x 50cm

NFS



Freda Surgenor

Stormy Seas

Acrylic

60 x 90cm

NFS

Highly commended



Geoffrey Anthony

Montague Island

Watercolour on paper

26 x 18cm

\$350 (Framed)



Hugh Cross

Last Light

Oil

41 x 30cm

\$220



Jack Woods

The Guiding Light

Acrylic on Board

36 x 46cm

\$450



Janette Sindel-Hand

The Hornby Light, Sydney

Acrylic

22 x 29cm

\$250



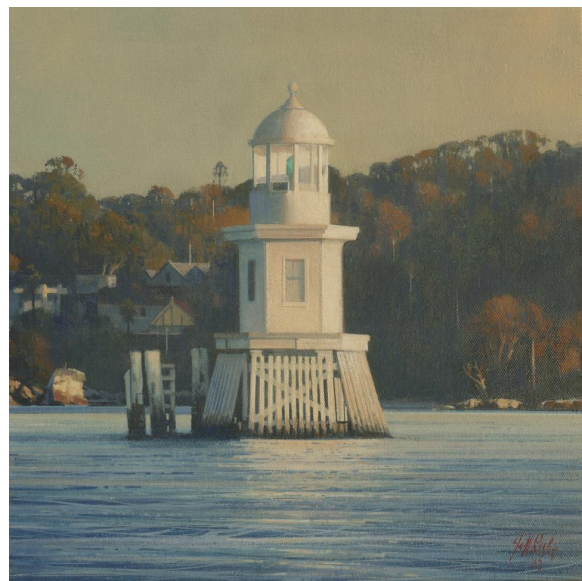
Jeff Rigby

The Wedding Cake

Acrylic on canvas

29.5 x 29.5cm

NFS



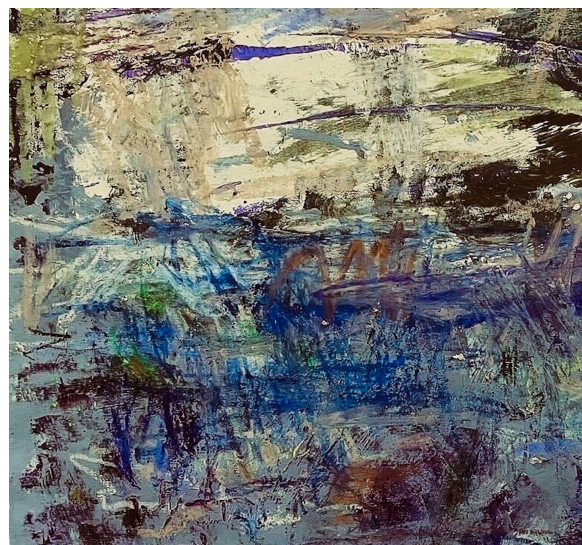
Jennifer Pullman

View to Sea

Oil

35.5 x 35.5cm

NFS



Jill Rogers

Tacking Point Lighthouse

Acrylic

51 x 70cm

\$850 (Framed)



John Downton OAM

Seaside Centennial. Green Cape. NSW

Oil on canvas board

50.8 x 61cm

\$3300



John Heffill

Jervis Bay

Mixed media

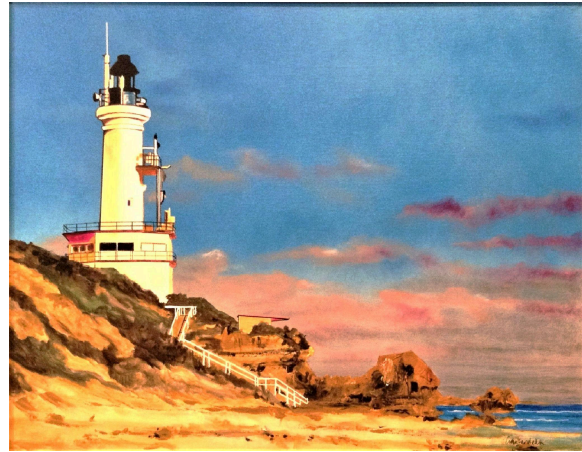
40.5 x 30.2cm

\$695



John Gambardella

Harbour Light
(Point Lonsdale Lighthouse, Victoria)
Oil on canvas
61 x 77cm
\$1100 (Framed)



John Murden

*Augustin Jean Fresnel, inventor of the Fresnel
Lense*
Acrylic
30.3 x 45.7cm
\$250

*please see end of catalogue for artist's notes



John Trowbridge

Menagerie Isle Lighthouse, Michigan USA
Watercolour
56 x 41cm
\$300



John Woodland

Lonely Outpost

Watercolour

29 x 29cm

\$650



Julian Bruere

Fastnet Lighthouse

Watercolour

52 x 34cm

NFS



Lawrie Walton

3 Lighthouses, South Mole, Point Moore, Kiama

Acrylic

118 x 75.5cm as a triptych,

38 x 75.5cm per painting.

\$2,250



Mark Bagally

Devils Gate

Watercolour

59.5 x 49.5cm

\$450



Mary Hyde

Point Lonsdale Lighthouse

Oil

20 x 35cm

NFS



Paul Deacon

Cross Sands Lightship

Oil

30.5 x 40.6cm

NFS



Peter Sharp

Pt Lonsdale Light

Oil

30 x 40cm

NFS



Robert Carter

Hornby Light

Oil on canvas board

40 x 50cm

\$890 (Framed)



Robyn Coleman

Chania Lighthouse Crete

Pastels on paper

25.5 x 40.5 cm

\$400



Stan Stefaniak FASMA

*ARAS 'SS Cathay Departing Sydney -
rounding Bradleys Head Lighthouse'*

Oil on linen

40 x 55cm

\$750



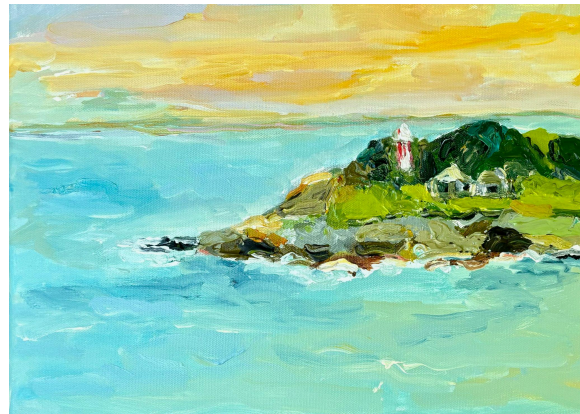
Suzanne Alexander

Hornby Lighthouse South Head

Acrylic

31 x 41cm

\$720



Suzy King

Macquarie Harbour Tasmania

Oil on canvas on board

46 x 60cm

\$1600



Ted Dansey

Pt Lonsdale

Watercolour

35 x 55cm

\$750



Highly commended

*Historical context for John Murden's artwork, provided at the request of the artist:

Augustin Jean Fresnel was born 10th May 1788 in France, and died at the age of 39 in July 1827. A French physicist, inventor, and civil engineer, he began his research into optics in 1814, and over a period of time eventually invented the Lens which is named after him. The constructed Lens is a succession of curved concentric rings, assembled on a flat plane, which creates a penetrating narrow beam of light. It would be almost impossible to make a similar solid lens with the same capabilities because of its thickness and enormous weight. This invention has saved countless ships and their crews from death and destruction over many years around the world. The Fresnel Lens theory is also used in spotlights, floodlights, railroad and traffic signals.