

Australian Society of Marine Artists  
National Exhibition 2022

August 13 - September 4 at the Royal Art Society of NSW



Online Catalogue



# Table of Contents

	Page(s)
About	3
Bruno Wein	4, 5
Cheryl Bruce	6, 7, 8
Chris Huber	9
Christine Hill	10, 11, 12
Don Braben	13
Don Fogg	14, 15
Don Talintyre	16
Earl Hingston	17, 18, 19
Geoff Anthony	20, 21, 22
Greg Hansell	23, 24, 25
Gwendolin Lewis	26
Jeff Rigby	27
Jennifer Pullman	28
John Downton	29, 30
John Murden	31, 32
John Perkins	33, 34, 35
John Woodland	36, 37, 38
Julian Bruere	39
Karen Bloomfield	40, 41, 42
Lawrie Walton	43, 44, 45
Leasha Craig	46
Mary Hyde	47
Peter Studley	48, 49
Robert Carter	50, 51, 52
Robyn Coleman	53, 54, 55
Rudy Rencoret	56, 57
Sarah Philips	58, 59
Stan Stefaniak	60, 61, 62
Suzanne Alexander	63, 64
Suzy King	65, 66, 67
Virgina Villa	68
Walter Knoop	69, 70, 71
Acknowledgments	72

## PATRONS

Sir James Hardy OBE  
Rear-Admiral The Hon  
Peter Sinclair AC  
Kay Cottee AO

## OFFICERS OF THE SOCIETY

### PRESIDENT

Karen Bloomfield FASMA  
VICE PRESIDENT  
Christine Hill FASMA  
STATE VICE PRESIDENTS  
NSW: Christine Hill FASMA  
VIC: Julien Bruere FASMA  
QLD: Greg Wardle ASMA  
SA: John Ford FASMA  
WA: Derek Newton ASMA  
TAS: John Murden ASMA

### HON SECRETARY

Dr Jennifer Pullman ASMA  
HON TREASURER &  
BULLETIN EDITOR  
John Woodland FASMA

### POSTAL ADDRESS:

The Secretary  
PO Box 350 Margate Beach  
Qld 4019

Catalogue editor Karen Bloomfield  
© All images have been  
reproduced with the permission  
of the artists. Copyright remains  
strictly the artists own and no  
images may be reproduced or  
shared without the permission  
of the artist.

Produced for online distribution,  
July 2022 for ASMA.



## About the Exhibition...

After a two year hiatus from offering our Members a physical exhibition due to the pandemic, we are thrilled to be back at the NSW Royal Art Society with a stunning collection of 68 works from our Exhibiting Members.

There is no specific theme for the National Exhibition. Instead, we encourage our Members to provide their best/favourite pieces for your viewing pleasure and a chance to win the President's Medal which is announced on opening night.

This year we were fortunate to have as Guest Speaker to launch the exhibition Captain Jeanine Drummond. You can read more about Captain Drummond [here](#).

The Australian Society of Marine Artists was founded in 1996 and its charter permits a broad and inclusive definition of marine art including seascapes, vessels, maritime themes, ports and harbours, flora and fauna. Membership of the Society is open to all who are interested in the sea and its connections. Our members include Internationally recognised artists, modelmakers, sculptors, printmakers, lithographers, historians, scrimshaw artists, printmakers, historians and students.

Membership enquiries are always welcome and should be addressed to The Secretary, Ms Jennifer Pullman at [2123bal@ozemail.com.au](mailto:2123bal@ozemail.com.au) or through our website [www.marineartistsaustralia.com.au](http://www.marineartistsaustralia.com.au)





***“Homeward Bound”***

acrylic/inks

46x46cm

\$400 AU

Finished by morning and heading home to port with the catch of the day.

***Artist: Bruno Wein***

For more information contact NSW Royal Art Society, [lavender@royalart.com](mailto:lavender@royalart.com)





***“Seniors Triumph”***

acrylic

40x50cm

\$450 AU

Ocean race at Hamilton Island with an age handicap (seniors), but still won on points!

***Artist: Bruno Wein***

For more information contact NSW Royal Art Society, [lavender@royalart.com](mailto:lavender@royalart.com)





***“Tucked in the Reeds”***

watercolour

43.5x53.5cm framed

\$500 AU

These fishing boats in Cambodia were tucked into the reeds under a bridge and captured my attention to get the tuk tuk driver to find me a place to sketch and photograph them from.

***Artist: Cheryl Bruce***

For more information contact NSW Royal Art Society, [lavender@royalart.com](mailto:lavender@royalart.com)





***“Big Tugs”***

watercolour

60.5x50.5cm framed

\$500 AU

These tug boats were moored in San Francisco off Sausalito. I was captured by the contrast of the red and black.

***Artist: Cheryl Bruce***

For more information contact NSW Royal Art Society, [lavender@royalart.com](mailto:lavender@royalart.com)





*“Racing the Storm”*

watercolour

33x33cm framed

\$280 AU

Gosford's Wednesday twilight sail on a dramatic stormy afternoon.

*Artist: Cheryl Bruce*

For more information contact NSW Royal Art Society, [lavender@royalart.com](mailto:lavender@royalart.com)







***“Overlooking Manly Harbour”***

oil on Belgium linen

65x100cm

\$3600 AU

A spectacular View! Crystal clear water, colours like opals found in Qld. Fleeting clouds changing the intense colours from one moment to the next.

***Artist: Chris Huber***

For more information contact NSW Royal Art Society, [lavender@royalart.com](mailto:lavender@royalart.com)





***“Little Manly Beach”***

oil

43x53cm in limed timber frame

\$480 AU

A summer day, at the end of the school holidays – a gorgeous little Harbour beach.

***Artist: Christine Hill***

For more information contact NSW Royal Art Society, [lavender@royalart.com](mailto:lavender@royalart.com)





***“Abbotsford Point Boat Shed”***

watercolour & pencil

45x50cm

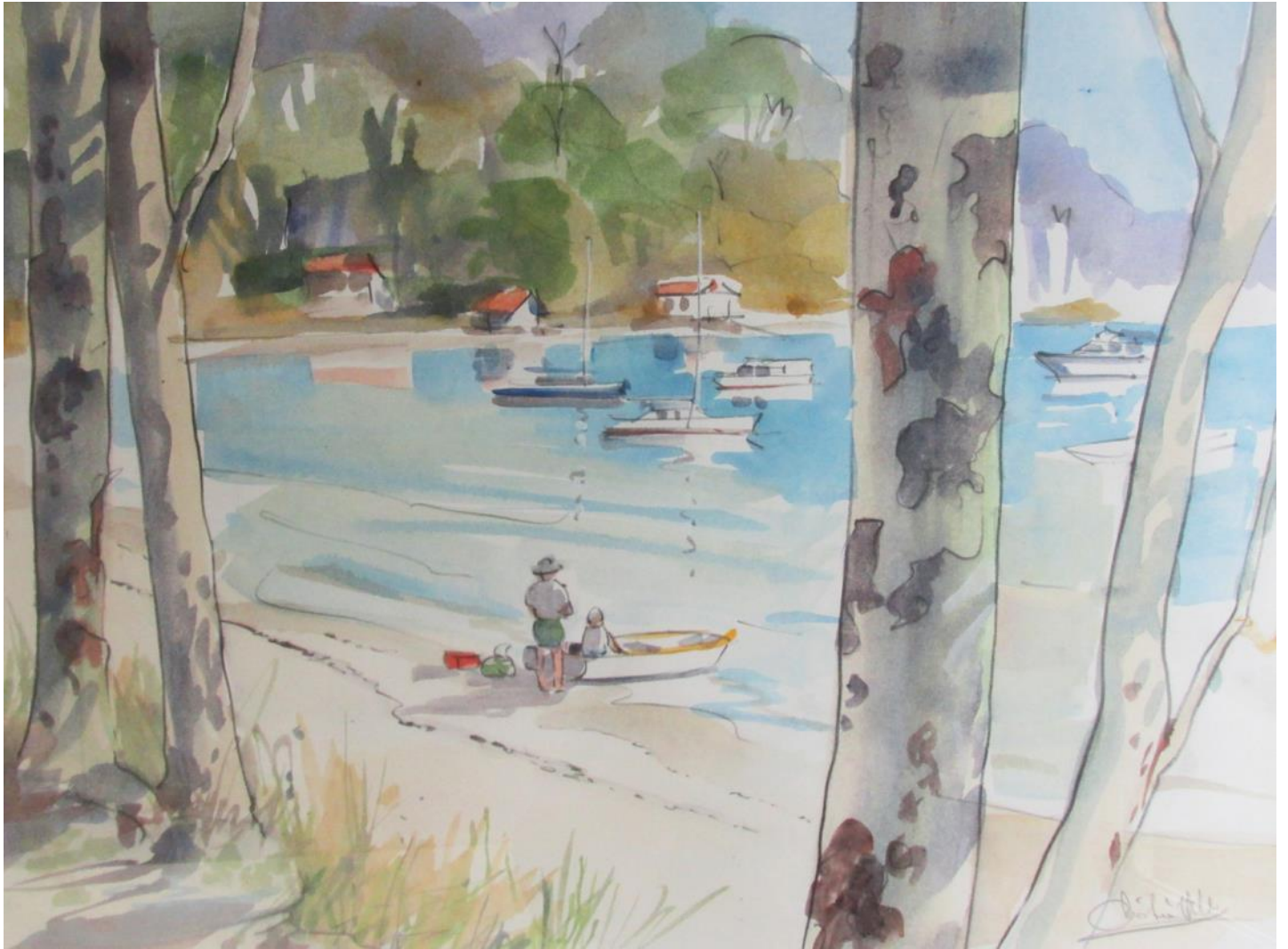
\$520 AU

One of the last working boatyards on the Parramatta River arm of Sydney Harbour  
- an artist's delight.

***Artist: Christine Hill***

For more information contact NSW Royal Art Society, [lavender@royalart.com](mailto:lavender@royalart.com)





***“Boating at Clareville”***

watercolour & graphite

50x60cm

\$480 AU

A quiet winter day for boating - what could be nicer!

***Artist: Christine Hill***

For more information contact NSW Royal Art Society, [lavender@royalart.com](mailto:lavender@royalart.com)





***“Tropical Towage Townsville”***

oil

50x60cm

\$850 AU

The tug SL *Herbert* manoeuvring the tanker *Pro Emerald* to the berth in the tropical port of Townsville.

***Artist: Don Braben***

For more information contact NSW Royal Art Society, [lavender@royalart.com](mailto:lavender@royalart.com)





**“Streaky Bay”**

watercolour & gouache

65x45cm

\$660 AU

Miniscule shells on the beach at Streaky Bay SA.

**Artist: Don Fogg**

For more information contact NSW Royal Art Society, [lavender@royalart.com](mailto:lavender@royalart.com)





*“Road to Cape Willoughby Lighthouse, Kangaroo Island”*

watercolour & gouache

37x55cm

\$600 AU

The approach to Cape Willoughby lighthouse, Kangaroo Island, South Australia.

*Artist: Don Fogg*

For more information contact NSW Royal Art Society, [lavender@royalart.com](mailto:lavender@royalart.com)





***“MV Krait - Mission Complete”***

oil on canvas

50x65cm framed

\$880 AU

During World War 2 formerly Japanese owned MV *Krait* was used in a clandestine raid to sink seven Japanese ships in Singapore Harbour.

***Artist: Don Talintyre***

For more information contact NSW Royal Art Society, [lavender@royalart.com](mailto:lavender@royalart.com)







**“On Duty”**

watercolour

64x82cm

\$1250 AU

The call comes ... it's not always plain sailing. Painted in my loose style, here denoting action. Confident brushmarks are important elements in my watercolour paintings.

**Artist: Earl Hingston**

For more information contact NSW Royal Art Society, [lavender@royalart.com](mailto:lavender@royalart.com)





***"Secluded Harbour"***

watercolour

57x73cm

\$1100 AU

A more designy, serene approach using a limited palette. The object ... what to understate/suggest, leave in, leave out, emphasise, in order to simplify.

***Artist: Earl Hingston***

For more information contact NSW Royal Art Society, [lavender@royalart.com](mailto:lavender@royalart.com)





***“Paddle Steamers at Echuca”***

watercolour

56x72cm

\$1100 AU

History on the water of the Murray. An era not to be forgotten. Confidently drawn with the brush and then limited areas of colour added.

***Artist: Earl Hingston***

For more information contact NSW Royal Art Society, [lavender@royalart.com](mailto:lavender@royalart.com)





**“FFG Canberra”**

watercolour

29.7cm x 42cm

NFS

Once proud member of the RAN fleet, my first ever posting in 1991,  
the HMAS *Canberra* FFG 02

**Artist: Geoff Anthony**

For more information contact NSW Royal Art Society, [lavender@royalart.com](mailto:lavender@royalart.com)





**“Rounding Cape York”**

watercolour

29.7x42cm

\$350 AU

On HMAS *Hobart's* run home, as we rounded Cape York heading south a Bulker was headed north and sailed past us. Most of us were on the flight deck as this was coming to the end on 117 straight days at sea. She was headed into the weather we had just left.

**Artist: Geoff Anthony**

For more information contact NSW Royal Art Society, [lavender@royalart.com](mailto:lavender@royalart.com)





***“ADF sailing day”***

watercolour

21x29.7cm

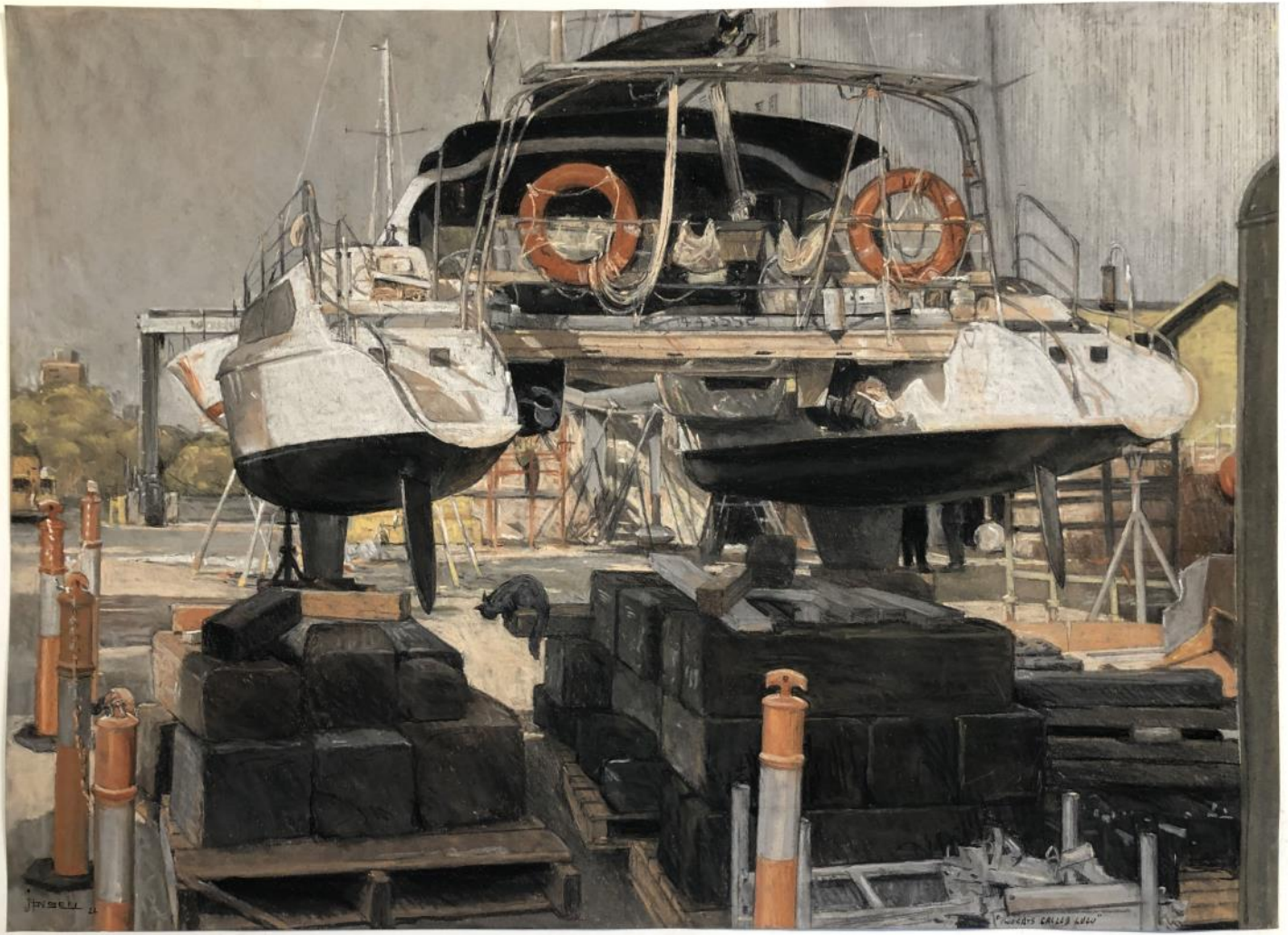
\$280 AU

A day out on the harbour for a Tri-Service sailing day in March this year. This was painted from a photograph I took whilst on the tender vessel with another photographer.

***Artist: Geoff Anthony***

For more information contact NSW Royal Art Society, [lavender@royalart.com](mailto:lavender@royalart.com)





***“Two Cats called Lulu”***

earth pastel on paper

81x100cm framed

\$5000 AU

*Lulu* was being serviced at Woolwich dockyard, I was reminded that I also had a cat called Lulu, so it became ‘Two cats called Lulu’.

**Artist: Greg Hansell**

For more information contact NSW Royal Art Society, [lavender@royalart.com](mailto:lavender@royalart.com)





***“Gone Shopping”***

earth pastel on paper

81x100cm framed

\$5000 AU

Hawkesbury river in flood at the Doctors house Windsor at 13.8m on the 9th March 2022.

***Artist: Greg Hansell***

For more information contact NSW Royal Art Society, [lavender@royalart.com](mailto:lavender@royalart.com)







**“Smokey Cape and the Canting Keel”**

earth pastel on paper

47x46cm framed

\$959 AU

Smokey cape (Ian Hansen’s boat) was in front of *Wild Oats 11s* keel at Woolwich dockyard.

**Artist: Greg Hansell**

For more information contact NSW Royal Art Society, [lavender@royalart.com](mailto:lavender@royalart.com)





***“The Red Columbus”***

soft pastel & mixed media

92x72cm

\$1800 AU

The *Red Columbus* in the floating dock, Newcastle Harbour NSW.

**Artist: Gwendolin Lewis**

For more information contact NSW Royal Art Society, [lavender@royalart.com](mailto:lavender@royalart.com)





***“The Helen Denny, after the blow”***

acrylic on canvas

29x54.5cm

NFS

The barque, "*Helen Denny*" making sail once more after the storm has passed.

***Artist: Jeff Rigby***

For more information contact NSW Royal Art Society, [lavender@royalart.com](mailto:lavender@royalart.com)





***“McIver Women's Sea Baths”***

acrylic on canvas

61x61cm

\$1750 AU

The excavated women's-only baths opened in 1876 and is situated on a rock platform with sweeping views to the sea. The baths are rectangular shaped and stretch 32 metres to the south of Coogee, NSW. Surrounded by high cliffs and coastal bays, it remains Australia's only rock pool dedicated to women and children.

***Artist: Jennifer Pullman***

For more information contact NSW Royal Art Society, [lavender@royalart.com](mailto:lavender@royalart.com)





*“The Visitor. Twofold Bay. Eden. NSW”*

oil on canvas

48.5 x 64cm

\$2850 AU

Cruise ship ready for some Eden fun.

*Artist: John Downton*

For more information contact NSW Royal Art Society, [lavender@royalart.com](mailto:lavender@royalart.com)





***“Jewels of the Coast. Kiama. NSW”***

oil on canvas

77x87cm

\$3300 AU

A beautiful day by the colourful sea.

***Artist: John Downton***

For more information contact NSW Royal Art Society, [lavender@royalart.com](mailto:lavender@royalart.com)





***“Orca Beaching To Take a Seal ”***

acrylic/inks

40x50cm

\$975 AU

This dynamic scene of an Orca beaching itself to take a seal is a fact of survival for this magnificent mammal.

***Artist: John Murden***

For more information contact NSW Royal Art Society, [lavender@royalart.com](mailto:lavender@royalart.com)





*“ Mures Fishing Boat Diana in Constitution Dock”*

oil on canvas

50.5x60.5cm

\$1250 AU

Deep Sea Fishing Boat *Diana*, one of Mures vessels ready for an early morning start.

*Artist: John Murden*

For more information contact NSW Royal Art Society, [lavender@royalart.com](mailto:lavender@royalart.com)







*“Lights on the Newcastle Port”*

oil on gesso board

60x100cm

\$2200 AU

Bulk carrier in the early evening, docked at the grain silos Port of Newcastle.

*Artist: John Perkins*

For more information contact NSW Royal Art Society, [lavender@royalart.com](mailto:lavender@royalart.com)





***“Coal Loading”***

oil on canvas

65x78cm

\$2200 AU

Panamanian cargo ship at coal loader Newcastle.

***Artist: John Perkins***

For more information contact NSW Royal Art Society, [lavender@royalart.com](mailto:lavender@royalart.com)





***“Low Tide Stockton”***

oil on gesso board

86x65cm

\$2200 AU

Interesting character - fishing boat at Stockton wharf great subject at low tide.

***Artist: John Perkins***

For more information contact NSW Royal Art Society, [lavender@royalart.com](mailto:lavender@royalart.com)





*“The Lifeboat”*

watercolour

67x83cm framed

\$1750 AU

A Commercial Sailing Ship in rough seas.

*Artist: John Woodland*

For more information contact NSW Royal Art Society, [lavender@royalart.com](mailto:lavender@royalart.com)





*“The Salvage of ss Amundra”*

watercolour

50x67cm framed

\$850 AU

A scene from the 1930s as a steam tug arrives to salvage the broken-down steamship.

*Artist: John Woodland*

For more information contact NSW Royal Art Society, [lavender@royalart.com](mailto:lavender@royalart.com)





***“Morning Sail”***

watercolour

63x52cm framed

\$850 AU

An old gaffed-rigged vessel in the morning light.

***Artist: John Woodland***

For more information contact NSW Royal Art Society, [lavender@royalart.com](mailto:lavender@royalart.com)





*“Wet Sands, St. Michael's Mount, UK”*

watercolour

70x90cm

\$1500 AU

The idyllic harbour of St Michael's Mount is reached at low tide from Marizion.

*Artist: Julian Bruere*

For more information contact NSW Royal Art Society, [lavender@royalart.com](mailto:lavender@royalart.com)





***“Sunday Loading on Horn Island”***

oil on linen

53x53cm framed

\$2400 AU

No break for the tropical heat!

***Artist: Karen Bloomfield***

For more information contact NSW Royal Art Society, [lavender@royalart.com](mailto:lavender@royalart.com)







*“Ferrous”*

oil on canvas

122x152cm

\$3900 AU

Iron ore colour under sulphur lights.

*Artist: Karen Bloomfield*

For more information contact NSW Royal Art Society, [lavender@royalart.com](mailto:lavender@royalart.com)





***“Depth”***

oil on canvas

120x120cm

\$3900 AU

The joy of a breach followed by a deep breath.

***Artist: Karen Bloomfield***

For more information contact NSW Royal Art Society, [lavender@royalart.com](mailto:lavender@royalart.com)





***“Bringing Home the Catch”***

watercolour

50x72.5cm

\$1100 AU

Early morning entering Lake's Entrance Harbour with the night's catch. Based on found photograph by unknown photographer.

***Artist: Lawrie Walton***

For more information contact NSW Royal Art Society, [lavender@royalart.com](mailto:lavender@royalart.com)





***“Hibbard Boat Shed”***

watercolour

50x72.5cm

\$1250 AU

Part of the Port Macquarie Maritime Museum. This is a working ship yard with over 120 years of history.

***Artist: Lawrie Walton***

For more information contact NSW Royal Art Society, [lavender@royalart.com](mailto:lavender@royalart.com)





***“Port of New York, 1938”***

watercolour

50x72.5cm

\$900 AU

After crossing the Atlantic during biggest hurricane in history two giraffes land in New York, bound for San Diego. Based on a true story by Lynda Rutledge.

***Artist: Lawrie Walton***

For more information contact NSW Royal Art Society, [lavender@royalart.com](mailto:lavender@royalart.com)





***“Adrift”***

stainless steel & resin

H 77 x W 50 x D 38cm

\$4300 AU

Adrift, unattached from all that holds us down and free to go with the current.

***Artist: Leasha Craig***

For more information contact NSW Royal Art Society, [lavender@royalart.com](mailto:lavender@royalart.com)





*“Tugs Stationed on the Yarra”*

oil

45x55cm framed

\$1100 AU

The Tugboats stationed within the busy Port of Melbourne. A framed oil on Linen Panel.

*Artist: Mary Hyde*

For more information contact NSW Royal Art Society, [lavender@royalart.com](mailto:lavender@royalart.com)





***“Boats at Mackerel Beach”***

oil on canvas

30x30cm

\$600 AU

The jetty at Mackerel Beach gets a lot of use and I wanted to show it as an active place with boats coming and going and people waiting for the ferry.

***Artist: Peter Studley***

For more information contact NSW Royal Art Society, [lavender@royalart.com](mailto:lavender@royalart.com)







***“The Blue Boatshed”***

oil on board

30x30cm

\$600 AU

Mackerel Beach has a distinctive blue boatshed which positively glows against the dark line of hills when the morning sun hits it.

***Artist: Peter Studley***

For more information contact NSW Royal Art Society, [lavender@royalart.com](mailto:lavender@royalart.com)





***“Bass Strait Crossing”***

oil on canvas

45x60cm

\$2000 AU

The topsail schooner *Huia* is seen here with the Bass Strait liner, *Loongana* on one of their many crossings of Bass Strait.

***Artist: Robert Carter***

For more information contact NSW Royal Art Society, [lavender@royalart.com](mailto:lavender@royalart.com)





***“A Glorious Fair Wind”***

oil on canvas

55x80cm

\$6000 AU

The four-masted ship *Falls of Clyde* in the South East Trades. She is still afloat in Honolulu awaiting restoration.

***Artist: Robert Carter***

For more information contact NSW Royal Art Society, [lavender@royalart.com](mailto:lavender@royalart.com)





***“Off Hornby Light”***

oil on canvas

40x50cm

\$2000 AU

Hornby Light on the southern headland of Sydney Harbour.

***Artist: Robert Carter***

For more information contact NSW Royal Art Society, [lavender@royalart.com](mailto:lavender@royalart.com)





***“Investigator”***

mixed media on paper

75x60cm

\$900 AU

As I sat on Constitution Dock, Hobart sketching the CSIRO research vessel ‘*Investigator*’ I could hear the Irish accents of the deckhands working on the mast of an old square rigger. I felt the warm morning sun on my back. The light is muted. The atmosphere is quiet. An elderly lady came over to look at my work. She said ‘Clever girl!’

***Artist: Robyn Coleman***

For more information contact NSW Royal Art Society, [lavender@royalart.com](mailto:lavender@royalart.com)





***“Sunset Tranquillity”***

earth pastels on paper

48x60cm

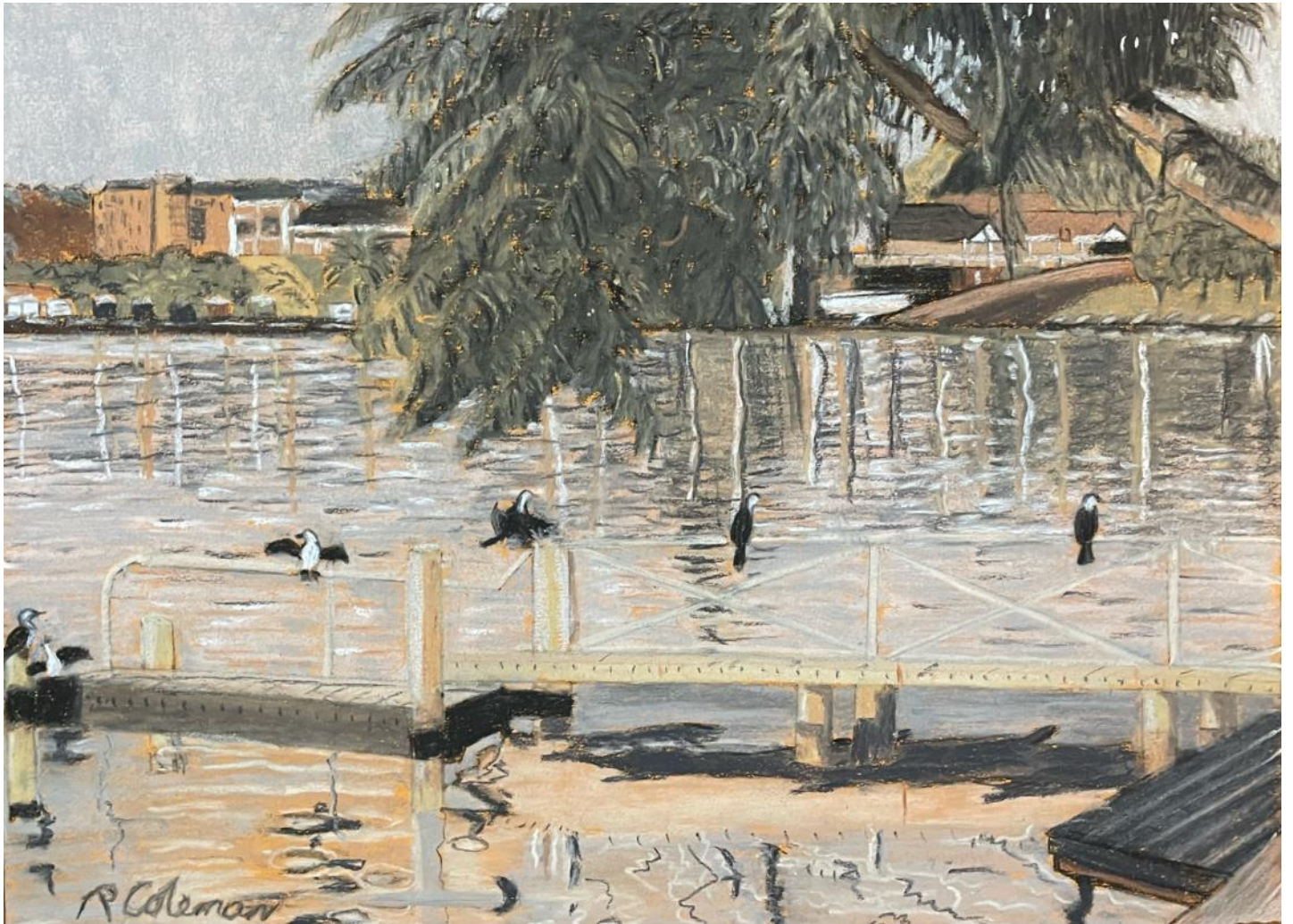
\$600 AU

Sitting in the late afternoon on the waterfront of Lake Macquarie is very tranquil. The cormorants air their wings on the boat shed jetties. The white lorikeets fly overhead in the fading daylight. The sunlight splinters into many colours of oranges, yellows, reds and pinks. It's very beautiful!

***Artist: Robyn Coleman***

For more information contact NSW Royal Art Society, [lavender@royalart.com](mailto:lavender@royalart.com)





*“Airing Time at the Jetty”*

earth pastels on paper

47x61cm

\$600 AU

Sitting at the shoreline on the eastern shore of Lake Macquarie on a quiet autumn day as the sun light faded I sketched the cormorants quietly air their wings on the adjacent jetty.

*Artist: Robyn Coleman*

For more information contact NSW Royal Art Society, [lavender@royalart.com](mailto:lavender@royalart.com)





*“Marbella, North of Valparaiso”*

pastel

58x47cm framed

\$650 AU

The coast of Chilean Central Coast is beautiful, with wonderful dark basalt rocks. Valparaiso would be over the horizon.

*Artist: Rudy Rencoret*

For more information contact NSW Royal Art Society, [lavender@royalart.com](mailto:lavender@royalart.com)







***“Waves breaking on the Rocks”***

pastel

61x45cm framed

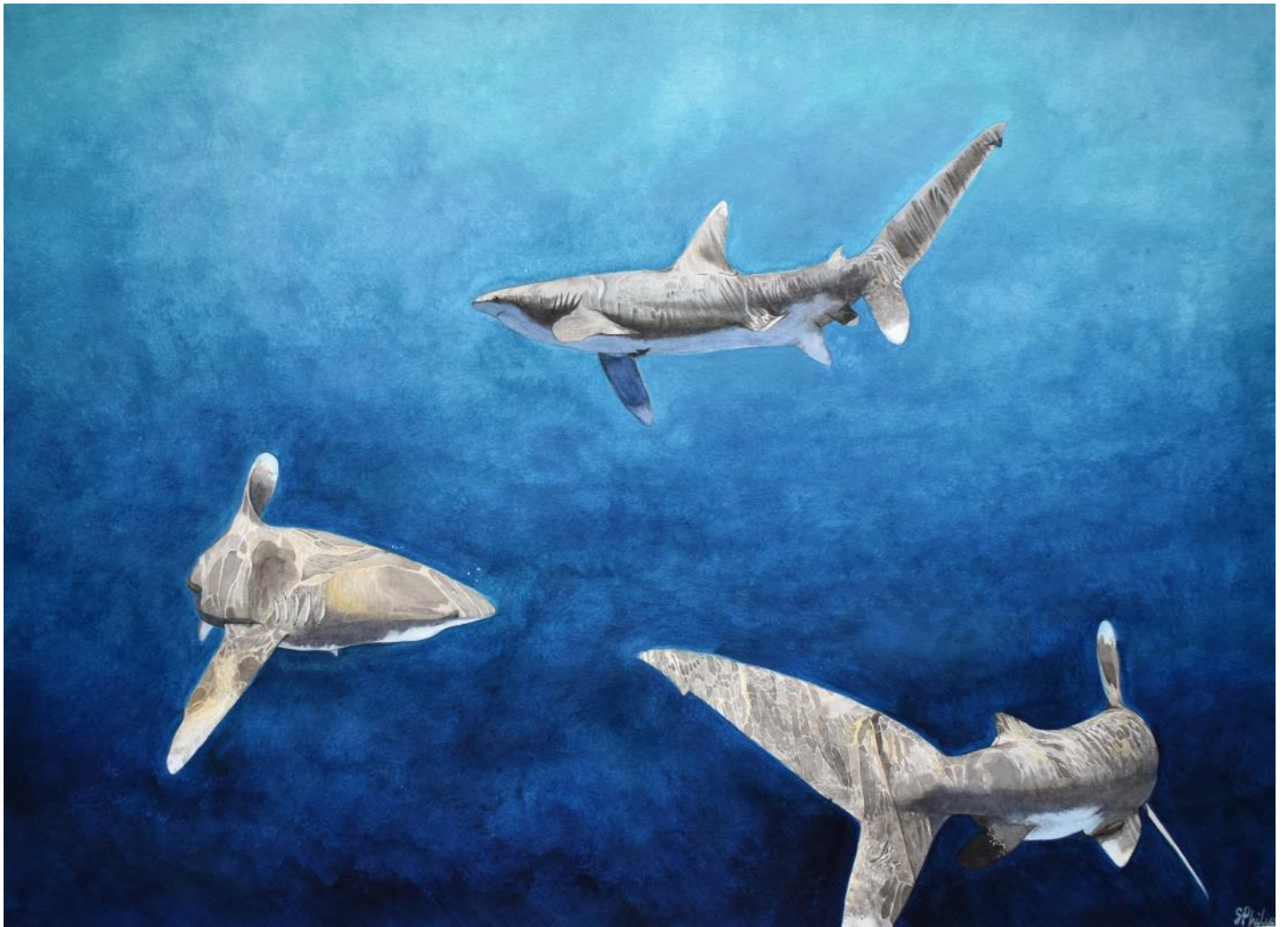
\$750 AU

It is only missing the noise of the busy seas and the salty scent of the mist.

***Artist: Rudy Rencoret***

For more information contact NSW Royal Art Society, [lavender@royalart.com](mailto:lavender@royalart.com)





***“Dancers”***

watercolours/gouache/acrylic

56x76cm framed

\$4100 AU

Dancers is a study of three oceanic whitetip sharks, dappled in sunlight and swimming in a dance-like formation.

***Artist: Sarah Philips***

For more information contact NSW Royal Art Society, [lavender@royalart.com](mailto:lavender@royalart.com)





***“Mercy”***

oil on canvas

76x61cm

\$4430 AU

Candles in the fracture of time before they are doused and washed away in the foam of the ocean.

***Artist: Sarah Philips***

For more information contact NSW Royal Art Society, [lavender@royalart.com](mailto:lavender@royalart.com)





***“Dawn Princess departing Circular Quay”***

oil on linen

41x61cm

\$700 AU

Princess Cruises vessel *Dawn Princess* departing Circular Quay Passenger Terminal, complimented with the Sydney Opera House as backdrop.

***Artist: Stan Stefaniak***

For more information contact NSW Royal Art Society, [lavender@royalart.com](mailto:lavender@royalart.com)





**“*Birubi and Giralong*”**

oil on linen

36x56cm

\$1250 AU

The retiring veteran pilot vessel *Birubi* being replaced with *Giralong*, as seen in Newcastle Harbour in 1959.

**Artist: Stan Stefaniak**

For more information contact NSW Royal Art Society, [lavender@royalart.com](mailto:lavender@royalart.com)





***“Reminiscence”***

oil on linen

49x60cm

\$660 AU

Reminiscing the days of sail and steam from the deck of a sailing ship.

***Artist: Stan Stefaniak***

For more information contact NSW Royal Art Society, [lavender@royalart.com](mailto:lavender@royalart.com)





*“Cockatoo Island from Clarke Point”*

mixed medium on paper

30x42cm

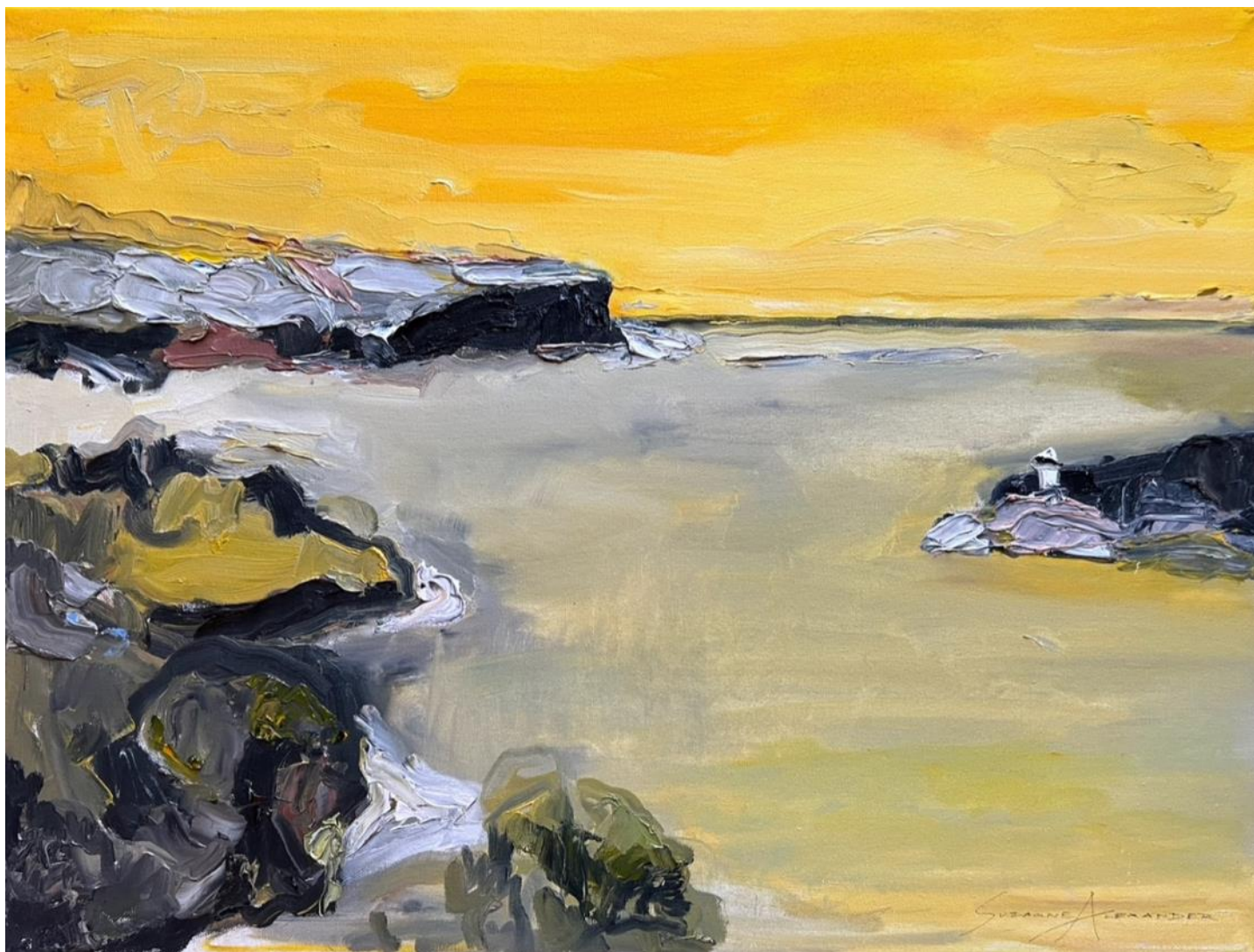
\$950 AU

For many years I have painted or drawn Cockatoo Island. Its history goes back to First Nation People. This image was sketched en Plein air from Clarke Point Woolwich. The island is no longer a working site for boat building and Naval works however remnants of cranes and buildings are remaining and used.

*Artist: Suzanne Alexander*

For more information contact NSW Royal Art Society, [lavender@royalart.com](mailto:lavender@royalart.com)





***“The Heads”***

acrylic on canvas

40x62cm

\$1250 AU

North and South Heads are the entrance to Sydney Harbour. Every day ships pass through these headlands whether huge tankers, naval ship, small vessels, tugs or kayakers. It is the forever changing light and atmosphere that captures the beauty of our Harbour.

***Artist: Suzanne Alexander***

For more information contact NSW Royal Art Society, [lavender@royalart.com](mailto:lavender@royalart.com)







***“Tribal Warrior at Dusk”***

oil on canvas

102x102cm

\$6000 AU

Built in 1908 as a pearling lugger working the waters of Australia's far North she is one of the last still continuously floating boats of her time.

***Artist: Suzy King***

For more information contact NSW Royal Art Society, [lavender@royalart.com](mailto:lavender@royalart.com)





***“Rozelle Bay #1”***

oil on canvas

33x62cm

\$1250 AU

A one time sanctuary for vessels of wood and steam where they could rest and repair.

***Artist: Suzy King***

For more information contact NSW Royal Art Society, [lavender@royalart.com](mailto:lavender@royalart.com)





***“Rozelle Bay #2”***

oil on canvas

33x62cm

\$1250 AU

White Bay Power Station watching wooden boats under restoration in a quiet corner of the bay.

***Artist: Suzy King***

For more information contact NSW Royal Art Society, [lavender@royalart.com](mailto:lavender@royalart.com)





***“HMB Endeavour”***

watercolour

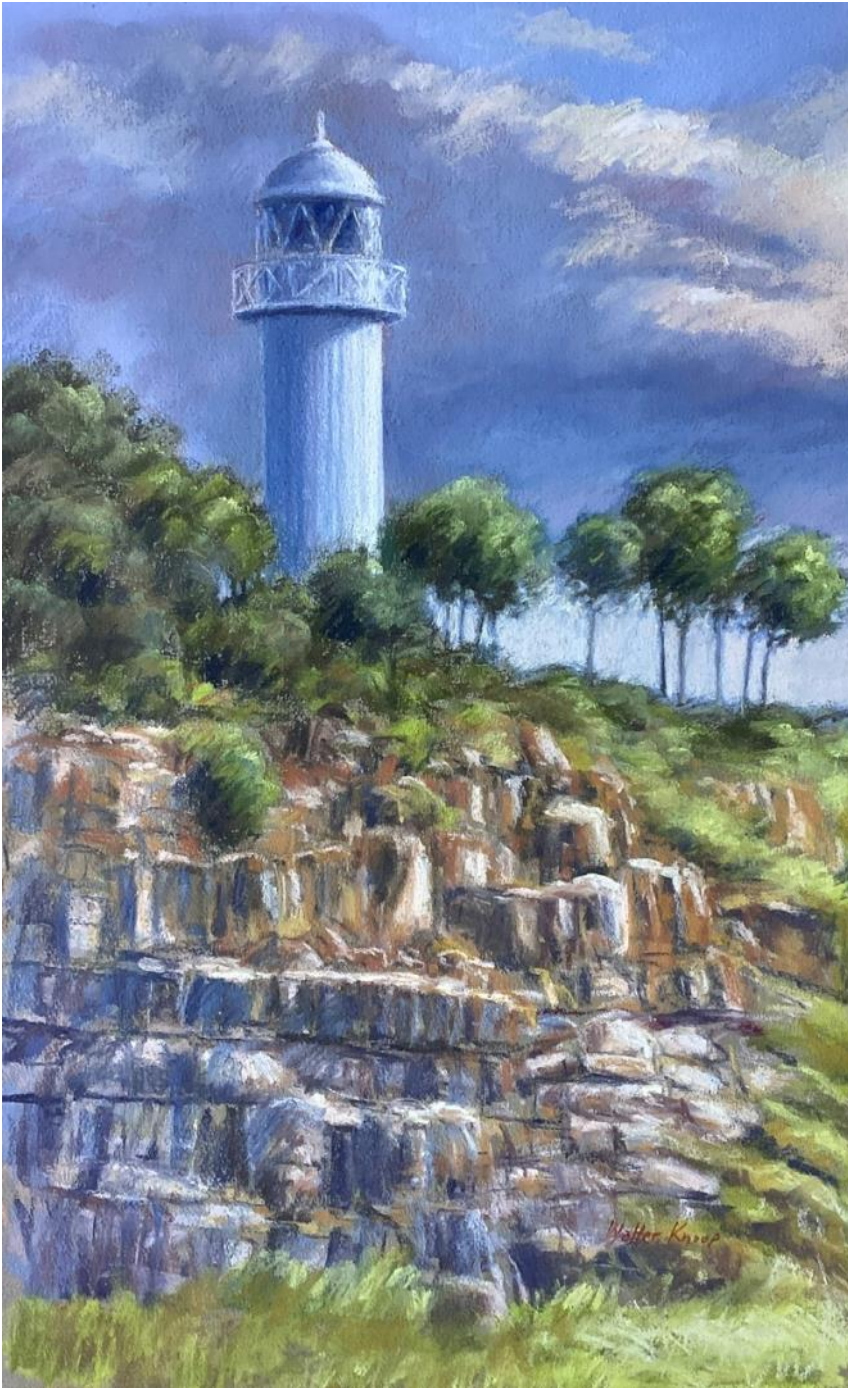
53x43cm framed

\$650 AU

***Artist: Virginia Villa***

For more information contact NSW Royal Art Society, [lavender@royalart.com](mailto:lavender@royalart.com)





**“Clarence River Lighthouse, Yamba”**

pastel

64x49cm

\$850 AU

The lighthouse in afternoon light with threatening storm clouds.

**Artist: Walter Knoop**

For more information contact NSW Royal Art Society, [lavender@royalart.com](mailto:lavender@royalart.com)





*“The Shape of Sails and Shadows”*

pastel

58x47cm

\$650 AU

Unfurling sails on a square rigger.

*Artist: Walter Knoop*

For more information contact NSW Royal Art Society, [lavender@royalart.com](mailto:lavender@royalart.com)





***“Brigham trawler, Providence”***

pastel

52x58cm

\$850 AU

Trawler with eased sheets on a summer breeze.

***Artist: Walter Knoop***

For more information contact NSW Royal Art Society, [lavender@royalart.com](mailto:lavender@royalart.com)



## Acknowledgements

An exhibition on any scale requires the input and assistance of many individuals.

I would especially like to thank the following individuals for their time over and above;

John Perkins & the NSW RAS Team  
Captain Jeanine Drummond  
The ASMA Committee  
Sue & John Woodland  
Jennifer Pullman  
Sarah Philips  
Suzy King  
Derek Morgan

Every Exhibiting Member involved. You are the reason we do this.

[www.marineartistsaustralia.com.au](http://www.marineartistsaustralia.com.au)

